

DESIGNED FOR YOUR ACTIVE LIFESTYLE

An important aspect of wellness is engagement and connection. That's why, as a resident of the Parc Place community, you'll find that there's no shortage of activities, events, programs and other ways to socialize and connect with like-minded peers. And because we're a pet-friendly community, your four-legged best friend can continue to share your life and your lifestyle.

WELLNESS PHILOSOPHY

Here, wellness is not only a philosophy, it's a way of life. Living a full life is what wellness is all about. It's the key to helping you maintain who you are. At Parc Place, our goal is to make it simple to explore a variety of ways to keep your mind, body and spirit healthy and active.

Our wellness philosophy starts with a focus on each resident's potential to achieve their personal goals through a personal wellness plan of engagement and connection. In addition to the many services and amenities of the community, you'll find this philosophy integrated throughout Parc Place.

Your personal wellness plan can include:

- Physical activity and good nutrition to enable you to stay strong and flexible
- Ways to strengthen your existing social connections and develop new ones to help you stay happy
- Learning initiatives and challenging, creative programs to keep your mind stimulated
- Faith-based involvement, volunteerism and service that let you continue to give your life purpose and meaning

(continued on back)





FITNESS

Our wellness philosophy starts with a focus on each resident's potential to achieve their personal goals.

PROGRAMS

Resident programs are daily experiences of involvement, fun and new connections. These programs are tailored around each resident's hobbies and interests, providing them the opportunity to continue to participate in activities they already love, or try something new and inspiring.

LOCATION

Our prime Bedford, Texas location is just a short drive from delightful outdoor recreation areas and parks. Off-site entertainment and cultural options can be found close by at venues. And living in a community with a convenient location also makes it easy for you to continue to be socially active.

LIST OF PROGRAMS

Educational programs & series

Art & music performances

Theater trips

Social events & groups

Fitness & wellness programs

Cards & games

Bible study & faith-based groups,
worship and Catholic communion

Trips – museums, shopping, dinner

AMENITIES AND SERVICES THAT LET YOU ENJOY LIFE TO THE FULLEST.

This is the time to enjoy life to the fullest, and the many amenities at Parc Place help you do just that. The dining room makes it easy to enjoy fine cuisine every day. Housekeeping services and on-site maintenance personnel leave you free to have fun. Fitness paths are great for stretching your legs or walking a four-legged friend. Pursue your passions independently or join in a wide variety of arts, classes, events and cultural and educational programs. Additional amenities and services include:

Amenities

- Dining room
- Sharp Grill
- Private dining room
- Atrium
- Library
- Fitness center
- Media room
- Event center and billiards
- Business center/resident computers
- Arts & activity room
- Hair salon
- Pool and spa area
- Garden
- Putting green
- "Wiggley Field" (dog park)
- Pet-friendly



Services Included

- Concierge services
- Fitness and wellness programs
- Entertainment, social and educational programs and events
- Basic cable
- Electric and water
- Maintenance and repairs
- Scheduled transportation
- Landscaping

Optional Services

- Chef-prepared meals served restaurant-style
- Housekeeping





CHEF-PREPARED MEALS MAKE ON-SITE DINING SOMETHING TO SAVOR.

Savor moments with friends and family in the dining room, where you'll discover fine cuisines — prepared with seasonal, locally sourced ingredients — designed to suit every mood, taste and occasion. Plus, you'll enjoy service and ambiance that's one-of-a-kind.

Complimentary breakfast is available Monday through Friday. Lunch and dinner meals are available at a reasonable cost and billed monthly.

A weekly menu is provided, so you'll be sure to know when your favorites are on the menu. Here's an example of what you and your taste buds can enjoy.

SAMPLE MENU

STARTERS

Spinach & Roquefort Salad
Caesar Salad

BAKED FISH WITH A LEMON CREAM SAUCE

Garlic Butter Rice
Broccoli

SHRIMP SCAMPI WITH LINGUINI

Julienne Vegetables
Garlic Bread

DESSERTS

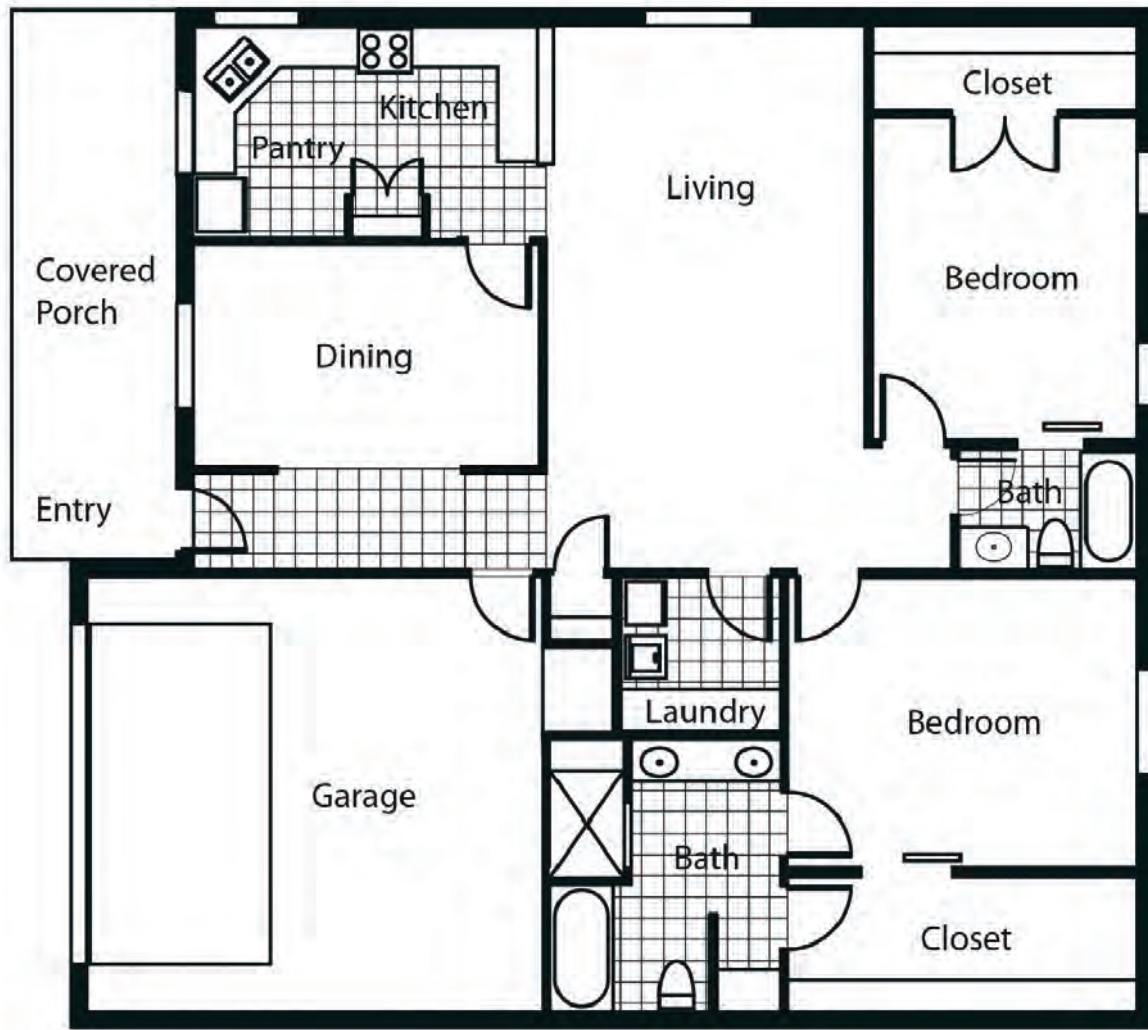
Lemon Meringue Pie
Tiramisu

Two Bedrooms, Two Baths with Garage

1,817 SQ. FT.

Patio Home Amenities

- 10-foot ceilings, crown molding
- Full kitchens with granite countertops, hardwood cabinets and stainless steel appliances
- Washer and dryer connection
- Dining area
- Two car garage
- Covered front porch
- Spacious closets
- Central heat and air conditioning with individual climate controls
- Includes basic cable
- Ceiling fans
- Gated community



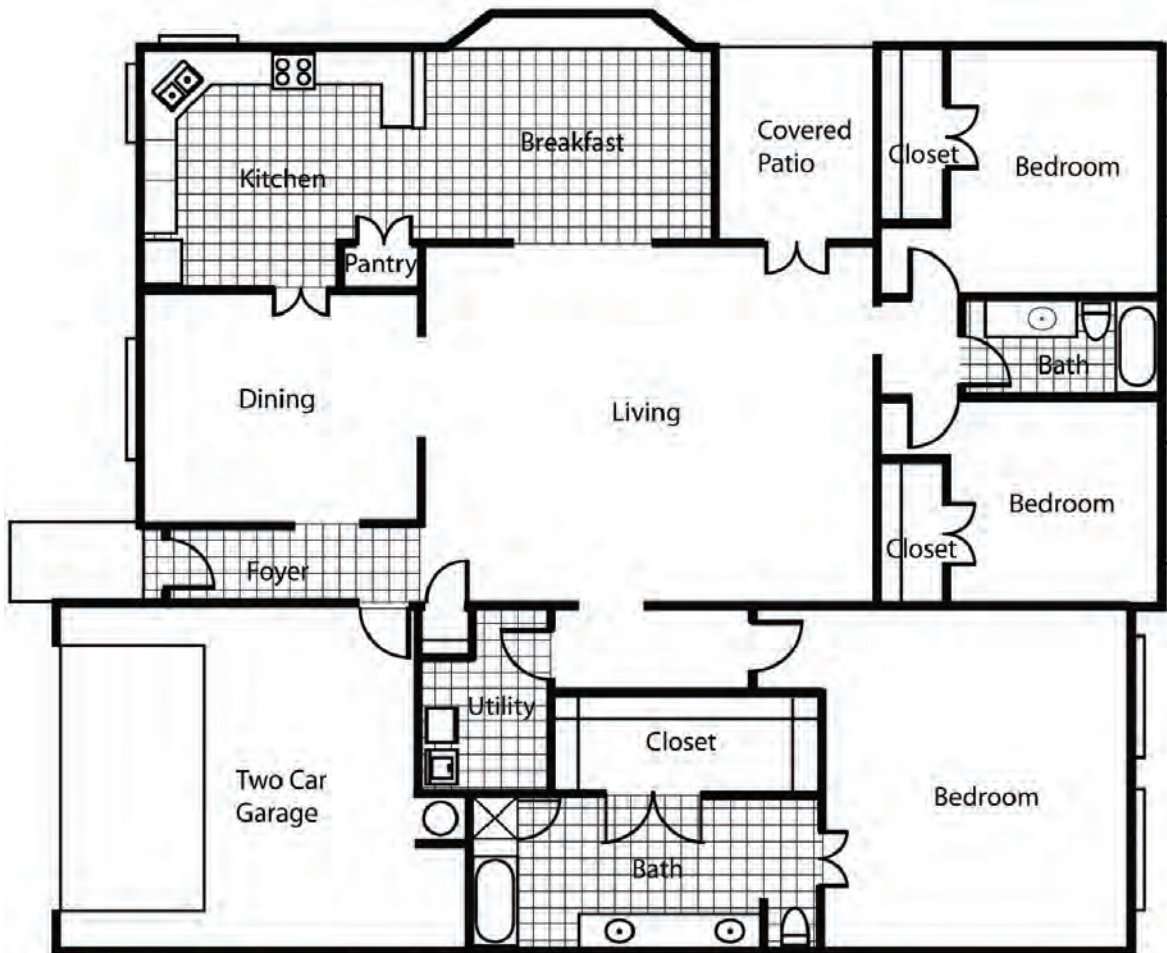
\$ _____

Three Bedrooms, Two Baths with Garage

1,900 SQ. FT.

Patio Home Amenities

- 10-foot ceilings, crown molding
- Full kitchens with granite countertops, hardwood cabinets and stainless steel appliances
- Washer and dryer connection
- Dining area
- Two car garage
- Covered patio
- Spacious closets
- Central heat and air conditioning with individual climate controls
- Ceiling fans
- Includes basic cable
- Gated community

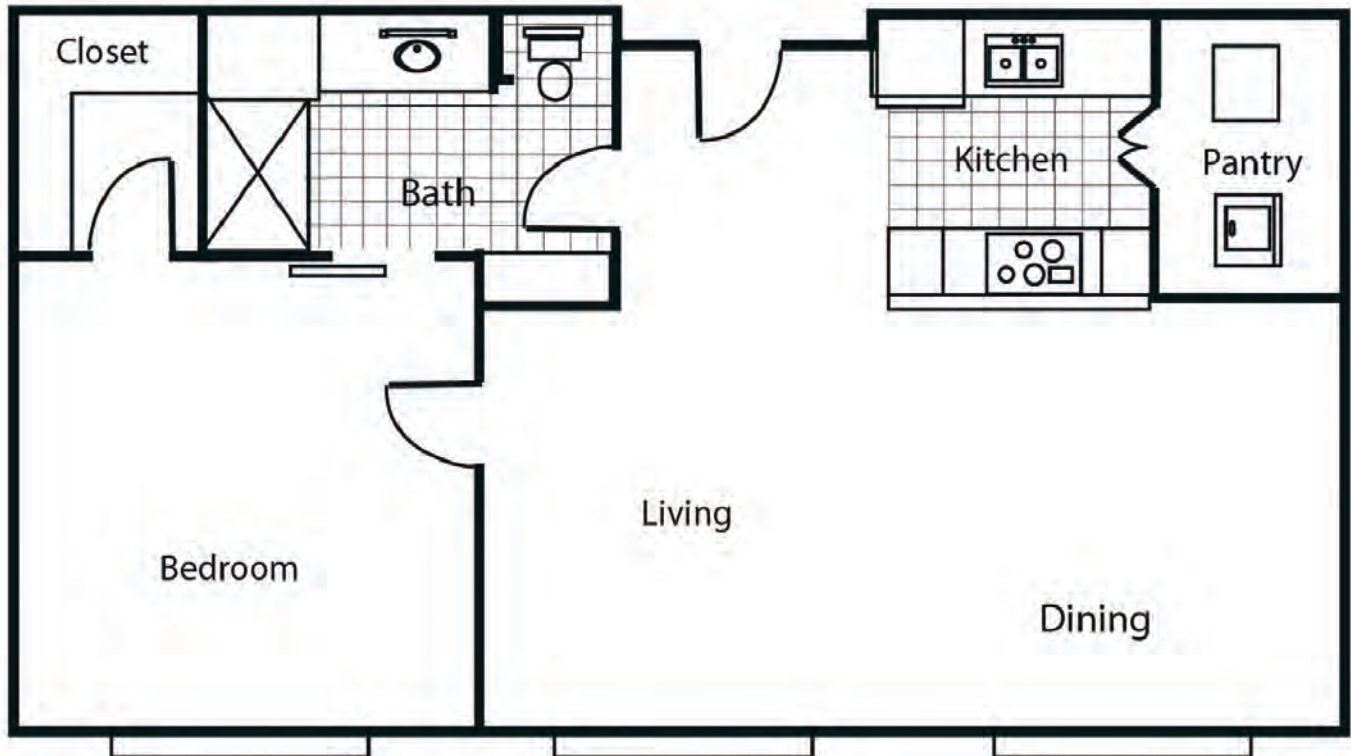


\$ _____

One Bedroom, One Bath
825 SQ. FT.

Home Amenities

- Walk-in shower
- Full kitchens with full size appliances
- Washer and dryer connection
- Dining area
- Spacious closet
- Central heat and air conditioning with individual climate controls
- Ceiling fans
- Includes basic cable
- Gated community

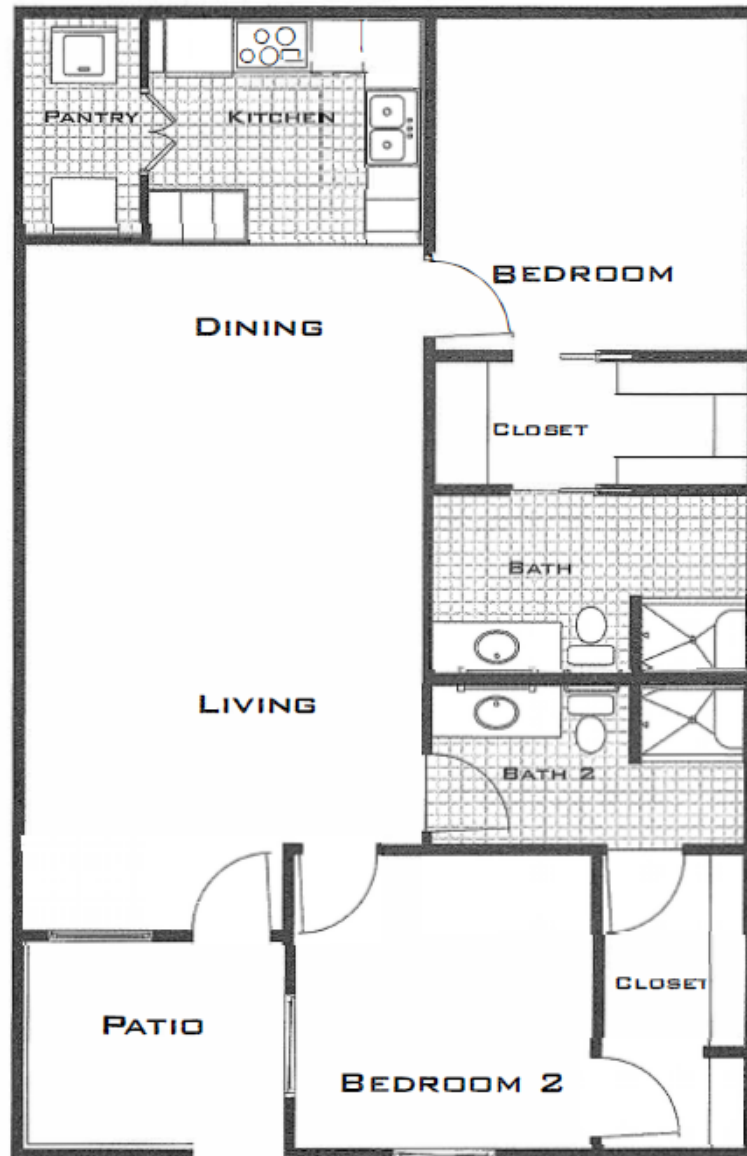


\$ _____

Two Bedroom, Two Bath
1190 SQ. FT.

Home Amenities

- Walk-in shower
- Full kitchens with full size appliances
- Washer and dryer connection
- Dining area
- Spacious closet
- Central heat and air conditioning with individual climate controls
- Ceiling fans
- Includes basic cable
- Gated community

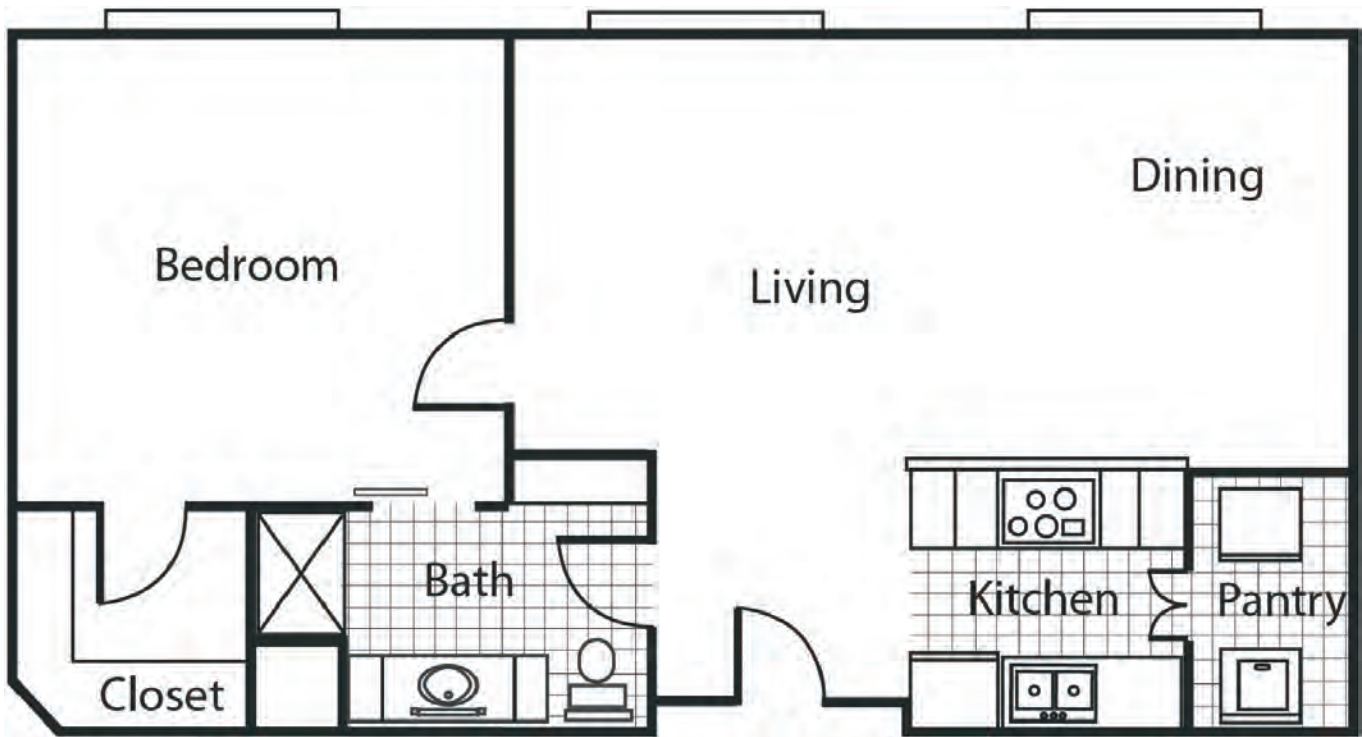


\$ _____

One Bedroom, One Bath
865 SQ. FT.

Home Amenities

- Walk-in shower
- Full kitchens with full size appliances
- Washer and dryer connection
- Dining area
- Spacious closet
- Central heat and air conditioning with individual climate controls
- Ceiling fans
- Includes basic cable
- Gated community



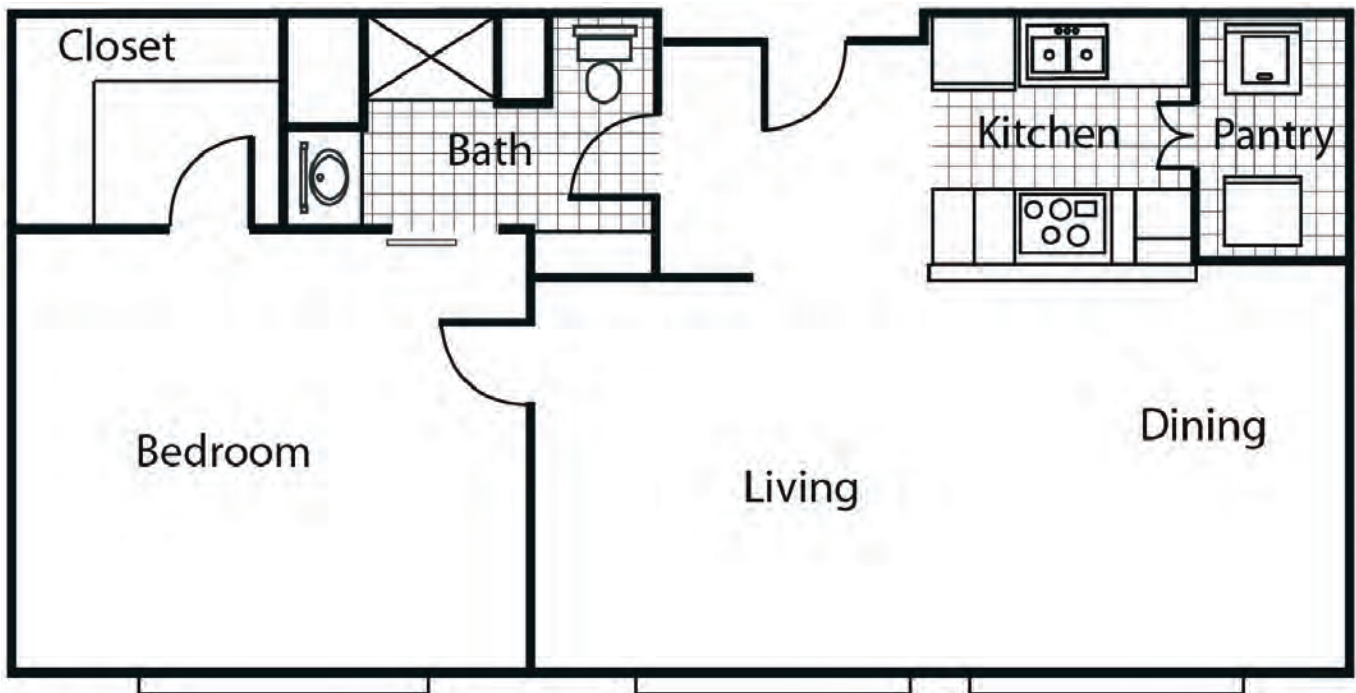
\$ _____

THE INDIAN PAINTBRUSH FLOOR PLAN

One Bedroom, One Bath
875 SQ. FT.

Home Amenities

- Walk-in shower
- Full kitchens with full size appliances
- Washer and dryer connection
- Dining area
- Spacious closet
- Central heat and air conditioning with individual climate controls
- Ceiling fans
- Includes basic cable
- Gated community



\$ _____

One Bedroom, One Bath with Den

880 SQ. FT.

Home Amenities

- Walk-in shower
- Full kitchens with full size appliances
- Washer and dryer connection
- Dining area
- Spacious closet
- Central heat and air conditioning with individual climate controls
- Ceiling fans
- Includes basic cable
- Gated community

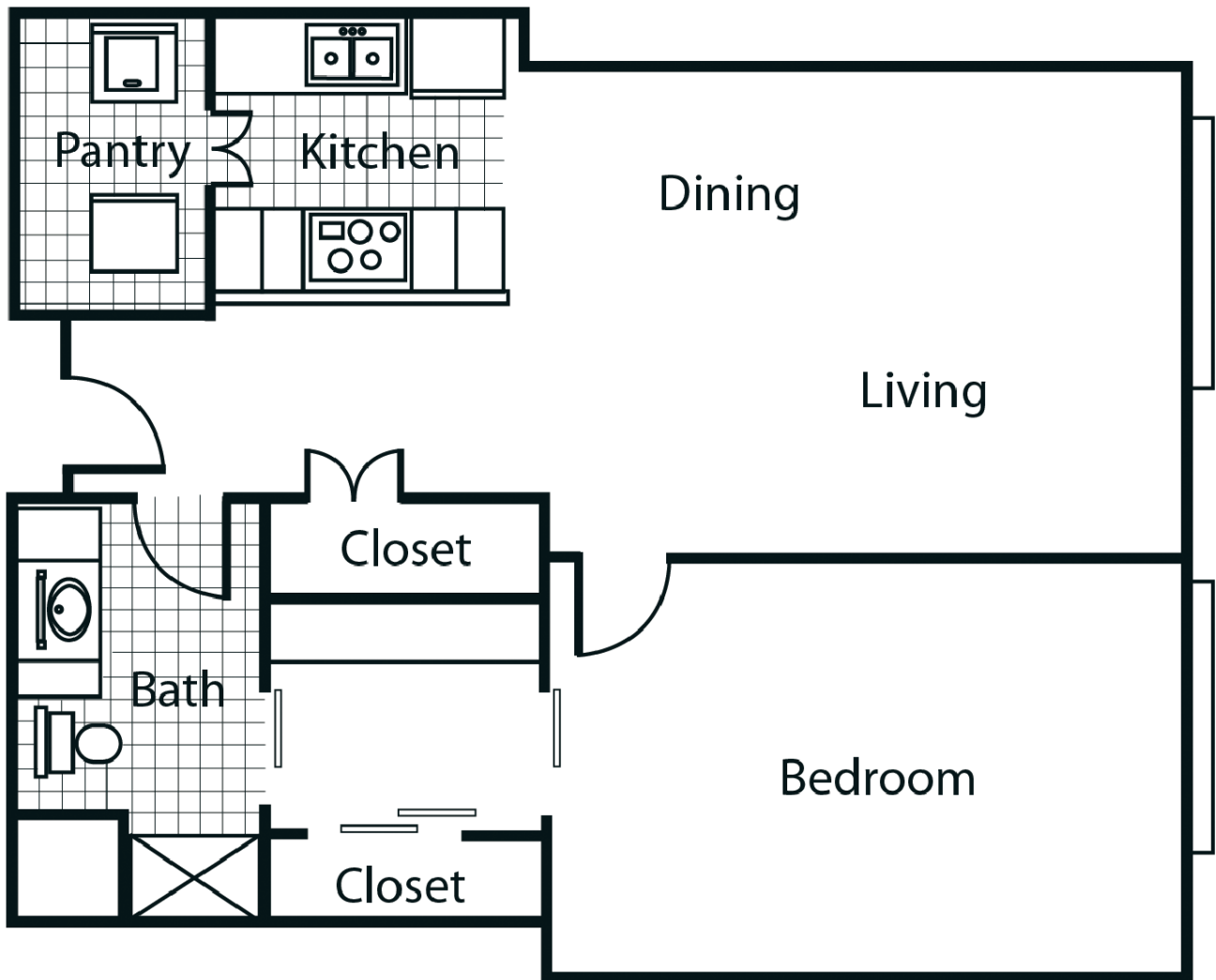


\$ _____

One Bedroom, One Bath
865 SQ. FT.

Home Amenities

- Walk-in shower
- Full kitchens with full size appliances
- Washer and dryer connection
- Dining area
- Spacious closets
- Central heat and air conditioning with individual climate controls
- Ceiling fans
- Includes basic cable
- Gatedcommunity



\$ _____

COMPARISON WORKSHEET

| | YOUR CURRENT MONTHLY COSTS | PARC PLACE'S MONTHLY FEES INCLUDE |
|--------------------------------------|----------------------------|--|
| RENT or MORTGAGE PAYMENT | \$ | Monthly rate |
| HOMEOWNER'S INSURANCE & PROPERTY TAX | \$ | All-inclusive rent |
| UTILITIES | \$ | Residents pay phone and internet |
| HOUSEKEEPING | \$ | Housekeeping service available |
| HOME MAINTENANCE | \$ | Interior and exterior maintenance and repairs; Maintenance Director & Technicians on-site |
| YARD MAINTENANCE | \$ | Landscaping and yard maintenance |
| TRANSPORTATION COSTS | \$ | Free scheduled transportation |
| FITNESS MEMBERSHIP | \$ | Well-equipped fitness center with ongoing exercise programs |
| TOTAL | \$ | \$ |

For more information, please visit our website:

ParcPlaceRetirement.com

Join us for a complimentary lunch and tour by calling

817.283.6700