



# HILLSIDE PRICING

You'll find everything you need to enjoy a worry-free and healthy lifestyle. You'll enjoy delicious meals prepared by our award-winning chef, coordinated social events and outings, housekeeping, transportation, wellness center, social hours, and more! Best of all, you pay no entrance fee and your affordable lease is month-to-month! The Hillside at Arbour Square has three individually decorated floors and a variety of apartment designs that will suit your taste. Choose from our studio, one-bedroom, or two-bedroom apartments.

## AFFORDABLE INCLUSIVE MONTHLY RENT INCLUDES:

- Apartment rental
- All utilities except telephone, cable, and Wi-Fi (local phone, cable, and Wi-Fi \$100/month)
- Two meals per day – Lunch and Dinner
- Activities program
- Housekeeping – every other week
- Transportation to local medical appointments and group outings
- Maintenance
- Laundry facilities

## HILLSIDE PRICING

Studio Apartment (434 square feet).....	\$3,195 per month
Deluxe Studio Apartment (481 square feet).....	\$3,350 per month
One Bedroom/One Bath Apartment (624-636 square feet) .....	\$3,845 per month
Deluxe One Bedroom/One Bath Apartment (685-781 square feet).....	\$3,995 per month
Two Bedroom/Two Bath Apartment (955-960 square feet).....	\$4,699 per month
Second Occupant Fee .....	\$ 799 per month

## ADDITIONAL CHARGES

- A \$500 REFUNDABLE deposit will hold the apartment you're looking for at the price you're looking for! This deposit will be credited towards the total deposit upon move-in.
- A one-time refundable Security Deposit:
  - Studio Apartment.....\$2,000
  - Deluxe Studio/One Bedroom Apartments.....\$2,500
  - Two Bedroom/Two Bath Apartments.....\$3,100
- A one-time non-refundable Community Fee based on one month's rent (\$3,195-\$4,699) and a \$75 utility set-up fee is required per unit prior to move-in
- A one-time non-refundable pet fee of \$350 and \$30/month
- Patio Fee: \$100/month
- Senior-friendly phone: \$35

Rates are effective as of 1/1/2021 and are subject to change.

SEE REVERSE SIDE FOR SAMPLE FLOOR PLANS.





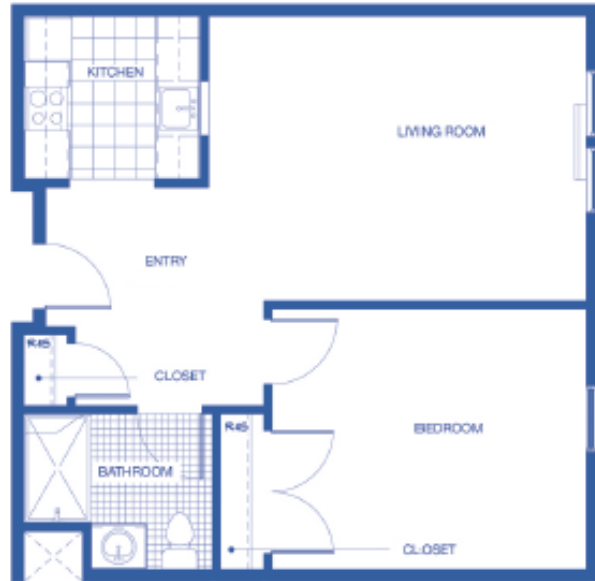
**ARBOUR  
SQUARE**  
of Harleysville

BY TRUE CONNECTION COMMUNITIES

# HILLSIDE FLOOR PLANS



**Studio Apartment**  
434 Square Feet



**One Bedroom/One Bath Apartment**  
636 Square Feet



**Two Bedroom/One Bath Apartment**  
960 Square Feet

Dimensions shown are approximate. Actual dimensions vary depending upon where apartment is located in the building.



695 Main Street, Harleysville, PA 19438  
[www.ArbourSquare.com](http://www.ArbourSquare.com) | 267-677-1200



**ARBOUR  
SQUARE**  
of Harleysville

BY TRUE  
CONNECTION  
COMMUNITIES