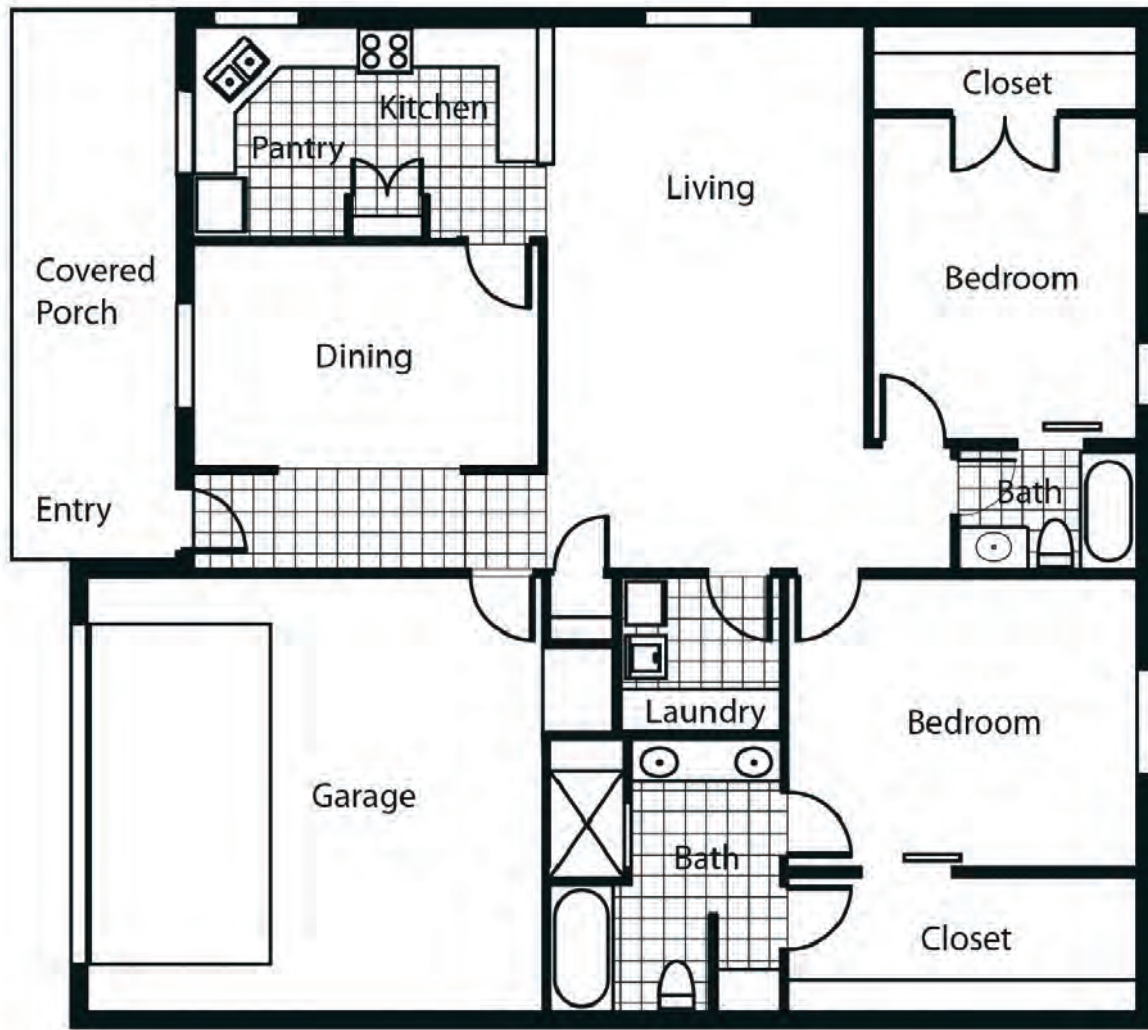


## Two Bedrooms, Two Baths with Garage

1,817 SQ. FT.

### Patio Home Amenities

- 10-foot ceilings, crown molding
- Full kitchens with granite countertops, hardwood cabinets and stainless steel appliances
- Washer and dryer connection
- Dining area
- Two car garage
- Covered front porch
- Spacious closets
- Central heat and air conditioning with individual climate controls
- Includes basic cable
- Ceiling fans
- Gated community



\$ \_\_\_\_\_